

CCMC Advanced Technologies Inc

“CCMC Prometheus: Predict the Future. Stabilize the World”

*A forecasting platform built for organizations navigating
volatility, risk, & global uncertainty*

Patent Pending Status & Enforceable First-Mover Advantage



What is CCMC

Advancing Technology for Tomorrow

Advanced Technology

CCMC is a B2B/B2G AI company delivering predictive analytics that enhance risk management, operational resilience, regulatory compliance, and strategic decision-making across critical industries

Data Unification

We unify raw data into clean, structured intelligence, enabling faster insights, lower uncertainty, and smarter, data-driven decisions

Next Gen ML-Driven Solutions

We build AI systems that process massive data at high speed, delivering more accurate insights with lower energy and cost, keeping organizations resilient in volatile environments

Key Target Sectors for CCMC Solutions



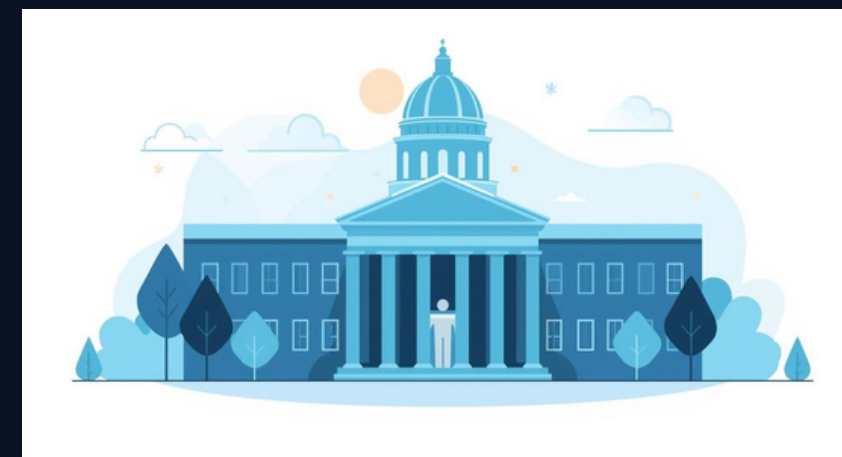
Financial Institutions

Optimizing performance for asset prediction, risk modeling, and volatility forecasting



Supply Chain & Logistics

Empowering supply chains through predictive disruption warning and logistics optimization



Energy & Utilities

Supporting energy decisions with actionable data-driven Grid/demand forecasting and shock detection

Client Discovery

Initial Vertical Strategy

Core Value

Prometheus turns volatility into foresight that protects capital and increases returns

Primary Revenue Engine

Finance delivers the fastest monetization with measurable, real-world performance gains

Expansion Logic

Proven templates in finance easily transfer to supply chains, energy, and manufacturing

Problem We Solve

Decisions are made before disruption hits. We detect early signals before shocks become costly



CCMC's Competitive Edge

- 01** Dynamic Learning & Forecasting: Utilizes data-driven anomaly detection to transform chaotic, fragmented data into foresight
- 02** Hardware Agnostic: Engineered to maintain high-fidelity performance on low-power systems
- 03** Infrastructure Independent: Operates autonomously without reliance on cloud or internet connectivity; Edge Capable
- 04** Federated Scalability: Uses modular architecture to scale to national systems, while maintaining ESG & regulatory alignment
- 05** Legacy Integration: Leverages robust, mathematical scaffolding to integrate seamlessly with existing systems—extending the durability of legacy hardware

Business & Legal Roadmap

Beta Launch & Non-Provisional Conversion (Q1 2026)

Launching our beta in early 2026 and converting our U.S. provisional patents to secure market exclusivity

Strategic Partnerships & Patent Cooperation Treaty Filing (2026-2028)

Strategic partnerships to validate product-market fit and prepare PCT conversion for IP protection in CAN, UK, EU, AUS, JPN, and other global markets

Global Expansion & Legal Jurisdiction in Key Markets (2029)

Official global launch, opening our services to international organizations, connecting the global economy, and executing our IP strategy worldwide

Commercial Model

(Exclusive Commercial Rights)

SaaS & Bundled Offering (Dynamic Learning)

Through SaaS delivery, clients gain frictionless access to advanced analytics and data tools, ensuring rapid deployment, minimal overhead, and predictable recurring revenue.

Data Plans

Flexible data plans provide high-accuracy datasets that boost model precision and increase cash flow

Partnerships

Strategic partnerships in key sectors enable tailored deployments and shared revenue growth

Additional Service Offerings

- Data/Tech Integration
- IT Infrastructure Leasing
- Data Verification
- Static & Semi-Static Services



IP Snapshot

Protecting Our Innovative Technology

Independent IP Stress-Test

Our CLP is based on independent stress-testing across market demand, technical readiness, legal strength, competition, and traction, confirming both commercial viability and defensible long-term value

Commercialization Likelihood (CLP™)

60% – 70%

A 60%–70% commercialization likelihood signals strong adoption potential, demonstrating clear market demand and validated interest across our target sectors

IP Valuation

Strong Investment Returns Ahead

IP-Driven Appeal

CCMC's six-invention patent family carries a 60-70 percent commercialization likelihood and a \$4.5M-\$15M IP valuation (est. \$9.7M), establishing a rare, defensible asset with high monetization potential

Current Valuation

Our current valuation stands at \$45 million, reflecting our foundational IP strength and legal market protection, which positions us well for future growth in a rapidly evolving industry landscape unopposed

Future Market Potential

With conservative projections indicating a **Market Potential Economic Value** ranging from **\$2.5 billion to \$4 billion**, we are positioned for exponential growth that offers substantial returns for our investors

Protected Market Opportunity

Unlocking significant growth potential unhindered

Vast Market Landscape

The global time-series market exceeds \$360B across finance, supply chain, energy, and beyond giving CCMC major opportunities to transform forecasting, optimization, and decision-making

Untapped Market

With over \$700B spent annually on forecasting, CCMC Prometheus can replace static analysis with real-time, adaptive intelligence across time-series-driven industries

CCMC Competitor Mapping

Competitor	Sector Reach	Strengths	CCMC Differentiator
Palantir (Foundry/Gotham)	Gov, Finance, Energy, Supply Chain	Massive data integration; deep institutional "ontology"	Modular, lightweight architecture
IBM, Oracle, SAP	Finance, Gov	Integrated legacy stacks; global compliance footprint	Real-time, transparent, and physics-informed ML
Snowflake / Databricks	All Verticals (Cross-industry)	Massive scale; unified data intelligence platforms	Dedicated time-series focus and embedded uncertainty quantification
FICO, Moody's	Finance	Deep credit/risk expertise and domain authority	Rare-event analytics and hybrid statistics-informed ML
Google, Microsoft	Cloud Analytics	Global scale; high usability; massive AI R&D budgets	Dedicated time-series focus and physics-informed constraints
Nixtla, MindsDB	Multi-vertical	Open-source neural forecasting; developer accessibility	Enterprise-ready ESN architecture and regulatory fit
OpenAI (GPT/ChatGPT)	Technology, Manufacturing, Global Enterprise	Multimodal capabilities (voice/video) and rapid innovation cycles	Uncertainty quantification (UQ) provides the audit-ready transparency OpenAI's models often lack

Unanticipated Volatility Is Driving Billions in Avoidable Losses

Core Pain Points

- Forecasts fail when conditions change
- Models assume stability that does not exist
- Regime shifts invalidate plans overnight
- Decisions rely on outdated assumptions

Why Existing Tools Fail

- Trained on averages, not transitions
- Too slow to adapt during change
- Overfit to calm environments
- Expensive to retrain at scale

Operational & Cost Impact

- Operating costs spike during disruptions
- Excess buffers inflate ongoing spend
- Missed upside during market shifts
- Late reactions cause penalties and downtime

What Executives Need

- Early regime shift detection
- Real-time adaptive forecasting
- Signals that work in volatility
- Lower cost per update

Simulated Performance: (Finance Case Study)

Key Highlights:

- Recession test: losses reduced by 35%
- Captured 27% upside via strategic shorts
- Back Test: \$10,000 → \$20,300 (24 months)
- Cumulative gain: +104%
- Sharpe Ratio > 1.2
- Monetizable foresight pre-live trading



Scenario Simulation & Stress Testing

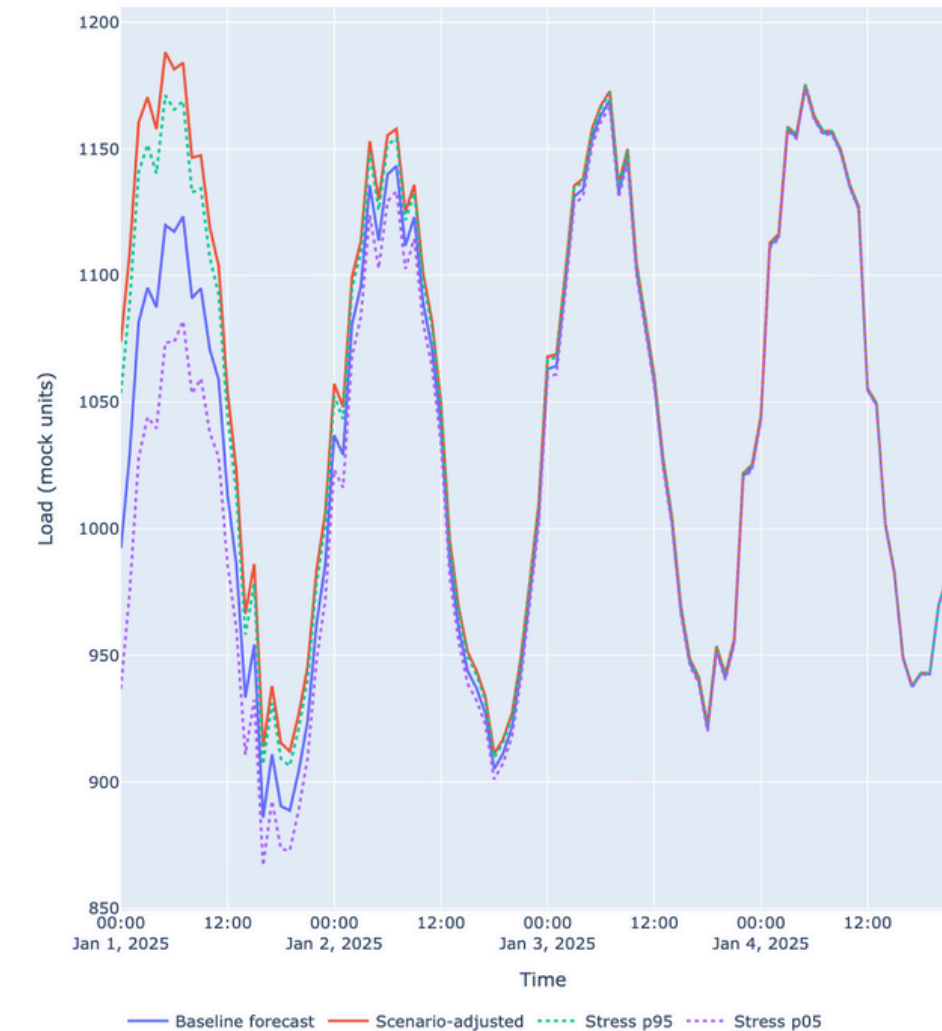
The right shows a mock-up of the Scenario Simulation and Stress Testing capability for organizations

It provides:

- Interactive 'what-if' sliders (weather shocks, economic activity, policy stringency, outage severity)
- Scenario-adjusted forecasting overlaid on the baseline
- Explainability Panel listing each scenario's contribution and window
- Monte Carlo stress test that generates 5% bands and distributions

Scenario Simulation & Stress Testing — Mock

Purpose: interactive 'what-ifs' on top of a baseline load forecast, plus Monte Carlo stress bands.



Scenario Controls

Temperature shock (°C equivalent; + increases load)

-87.5 76.5 65.5 54.5 43.5 32.5 21.5 10.5 0 0.5 1 1.5 2 2.5 3 3.5 4 4.5 5 5.5 6

Economic activity shock (%; + increases load)

-6 -5.5 -5 -4.5 -4 -3.5 -3 -2.5 -2 -1.5 -1 -0.5 0 0.5 1 1.5 2 2.5 3 3.5 4 4.5 5 5.5 6

Policy stringency (index; + decreases load)

-43.7 53.2 62.7 53.2 62.1 75.5 2.6 0.7 6.2 26.6 7.5 11.2 5.7 52.2 28.5 7.5 3.2 5.3 7.5 4

Outage severity (0=none; higher = more impact)

0 0.25 0.5 0.75 1 1.25 1.5 1.75 2 2.25 2.5 2.75 3

Scenario start (hours from now) 0

Duration (hours) 96

Decay (0 = flat; higher = fades faster)

0 0.01 0.02 0.03 0.04 0.05 0.06 0.07 0.08 0.09 0.1 0.11 0.12 0.13 0.14 0.15

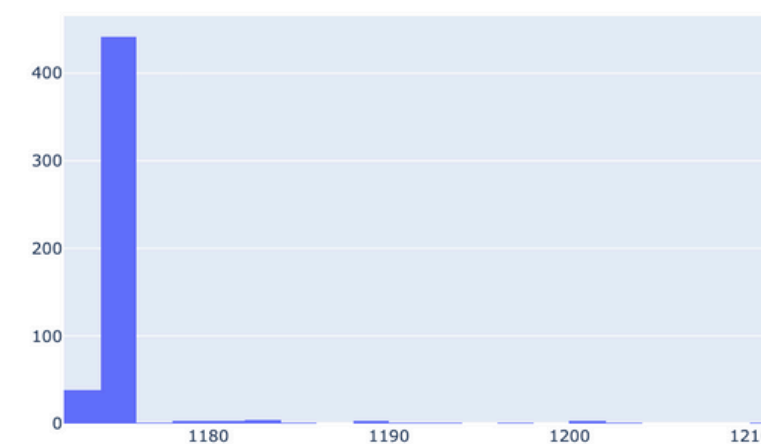
Run Monte Carlo stress test

Explainability (per-scenario contribution):

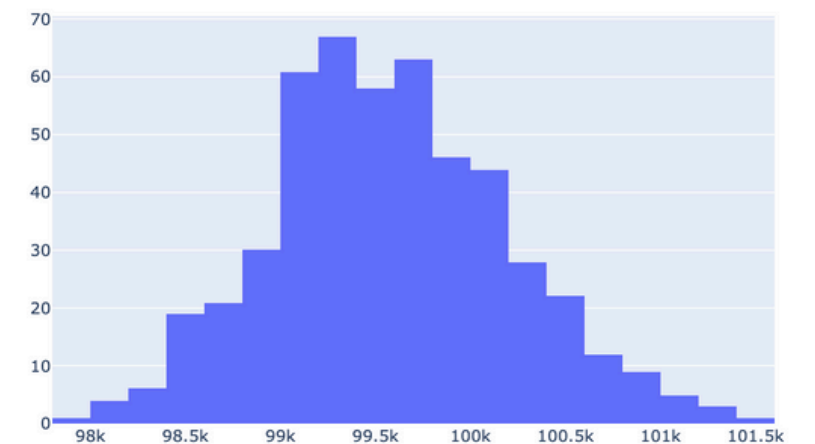
- Temperature shock (temperature): magnitude=6.0, window=[0, 96]h, sens=0.015, total Δ =1597.7
- Economic shock (economic): magnitude=-2.5, window=[0, 96]h, sens=0.01, total Δ =-443.8
- Policy shock (policy): magnitude=-1.75, window=[0, 96]h, sens=-0.007, total Δ =217.5
- Equipment outage (equipment): magnitude=0.25, window=[0, 96]h, sens=0.02, total Δ =88.8

Interpretation: Δ values represent the summed load impact over the forecast horizon window.

Stress test distribution: Max load



Stress test distribution: Total energy (sum)



Investor Takeaway

Unlocking Future Growth Potential

High-Growth Opportunity

A strategic bet on exclusive commercial rights and market protection

Why CCMC Delivers Asymmetric Upside

- **CLP™: Smart, probability-weighted risk metric**
 - Ensures clearer return expectations across sectors
- **IP Valuation: \$9.7M**
 - Rare upper-tier ranking for early-stage technology
- **Royalty Potential: \$10M–\$24M per vertical annually**
 - Significant upside through OEM and embedded analytics
- **Finance-First GTM Strategy: Highest-return entry point**
 - Proven path to scale into supply chain, energy, & government for recurring multi-vertical revenue

\$2.5B-\$4.5B

Estimated Market Potential Economic Value (Conservative Estimates)

The projected MPEV demonstrates a substantial and defensible market opportunity that CCMC is well-positioned to capitalize on through its patent-pending advanced technology and strategic execution, making this a safe and strategic investment opportunity

Closing Vision

Shaping the Future through Data

Transformative Impact

Our technologies will create a **transformative impact**, empowering organizations to harness data for strategic intelligence, driving innovation and growth across the economy

Sustainable (ESG) Solutions

We provide **sustainability-driven (ESG) solutions** that increase efficiency, improve performance, and strengthen bottom-line results, **generating financial returns** while advancing environmental and social outcomes

Strategic Partnerships

Strategic partnerships empower clients with a **bleeding-edge advantage**, while CCMC expands data access, enhanced intelligence, and increased brand presence, building a household name rooted in security, stability, and trust

Contact

We are committed to **driving data innovation** for our partners and investors.

Phone: (224) 212-1350
Email: mario.tovar@ccmc.global
Website: ccmctech.global

