
CCMC Advanced Technologies
Inc.

CCMC Prometheus: Executive Deck

*A forecasting platform built for organizations navigating
volatility, risk, & global uncertainty.*

"Foresight/Forecast as a Service: Securing the Future P&L"



What is CCMC

Advancing Technology for Tomorrow

Advanced Technology

CCMC is a B2B/B2G AI company delivering predictive analytics that enhance risk management, operational resilience, regulatory compliance, and strategic decision-making across critical industries.

Data Optimization

We optimize raw data into clean, structured intelligence, enabling faster insights, lower uncertainty, and smarter, data-driven decisions.

AI-Driven Solutions

We build AI systems that process massive data at high speed, delivering more accurate insights with lower energy and cost, keeping organizations resilient in volatile environments.

Key Target Sectors for CCMC Solutions



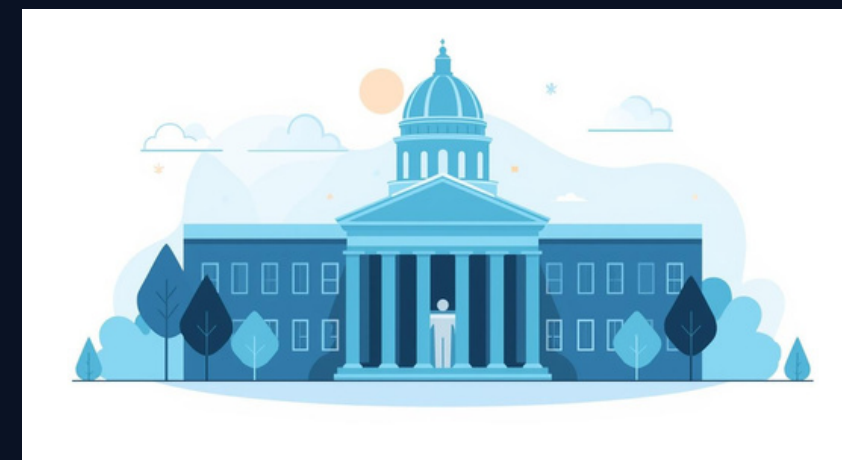
Financial Institutions

Optimizing performance for asset prediction, risk modeling, and volatility forecasting.



Government Policy

Empowering governments through predictive disruption warning and proactive optimization.



Energy & Utilities

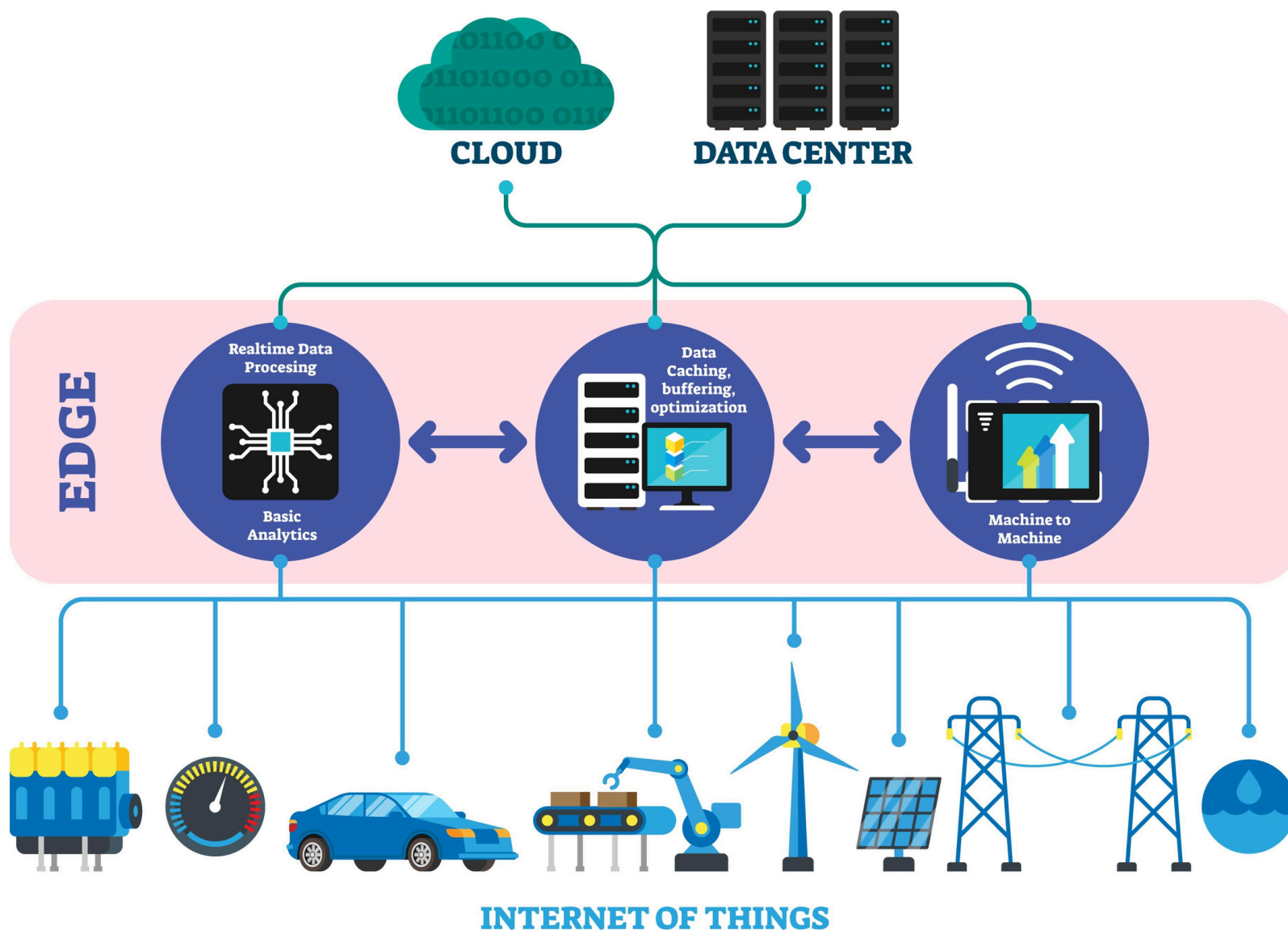
Supporting energy decisions with actionable data-driven Grid/demand forecasting and shock detection.

The Executive Problem (The "Broken Track")

The Reality: Modern AI is a "Cloud-First" prisoner. It requires massive power, constant 5G connectivity, and high latency.

- The Failure Point: In volatile, real-world environments, battlefields, remote oil rigs, or global trade blockades, traditional AI goes dark.
- The "So What": If your AI can't think when the internet is down or the "weather" gets rough, it's not an asset, it's a liability.

Edge Computing



The Philosophy (Built for the Dirt)

Think of the competition like a Super-fast Racecar. It's unbeatable on a paved track with a full pit crew. But life isn't a paved track.

The Prometheus Solution: We are the Rugged, Off-road 4x4.

- We turn the wind into a map (Dynamic Real-time learning & foresight).
- We run on whatever fuel is available (Low Power/Noisy Data).
- We don't need the paved road (The Cloud).
- We don't need the pit crew (Constant Internet).

The Technical Leap (The Transparent Hood)

The Innovation: We replaced "Black Box" Deep Learning with Echo State Networks (ESN).

- Explainability: Most AI has the hood welded shut. Prometheus has a see through Hood. You see exactly which gear is turning, satisfying auditors and regulators.
- Efficiency: We run on a \$50 chip, not a \$40,000 server. We use 90% less power.
- Physics-Informed: We don't just guess; we follow the laws of the physical world. It's the difference between a "hunch" and "engineering."

The Strategy Loop (Beating the News Cycle)

We don't just report; we Observe, Translate, and Act before the market reacts.

- The Competition: Reads the news on Day 90 and hits the brakes too late.
- Prometheus User: Sees the signal on Day 1, makes the turn, and is 500 miles away by the time the crash happens.

Vertical P&L Impact (The "Red Zones")

We take over existing line items to prove a 3–5% margin gain.

(Simulations & Examples)

Vertical

The "Broken Part"

The Prometheus Fix

Banking

Liquidity "Fuel Pump"

Move \$1.3B into energy/gold before the 48-hour freeze.

Ag/Orchards

Supply Chain "Tires"

Switch from luxury nuts to domestic rice 90 days before a blockade.

Energy

Grid "Fuses"

Predict demand shocks in milliseconds to prevent transformer blowouts.

Supply Chain

Logistics "Transmission"

See the "shavings in the oil" and reroute freight before the port closes.

The "Alpha of Foresight" (The Math)

We quantify the Price of Silence.

- Applied Scenario: A 70% probability of a South China Sea blockade.
- Passive Reaction: \$4M Loss (perished exports).
- Active Hedge (Prometheus): \$3.2M Preserved Revenue (domestic pivot).
- ROI: 540% on a single strategic decision.

$$\text{ROI} = \frac{(\text{Value of Mitigated Risk} + \text{Opportunity Gain}) - \text{Cost of Prometheus}}{\text{Cost of Prometheus}}$$

The IP Moat (Title & Registration)

We aren't a "mod shop"; we own the engine design.



- 6 Patent-Pending Inventions: Protecting our ESN architecture and adaptive regularization.
- FTO (Freedom to Operate): Foundational patents have expired; we own the modern, optimized 2026 version.
- CLP (Commercialization Likelihood): 60–70%. Most competitors sit at 15%. Our "Market Pull" is verified.

Use of Proceeds (Tuning the Engine)

Your capital is the fuel to move from Simulated Outperformance to Market Dominance:

1. Compute Scale: Moving to high-frequency live trading.
2. Live Pilots: Scaling in Energy, Defense, and Supply Chain.
3. Licensing Engine: Formalizing OEM royalties with industrial giants.

The Final Word

"Your current risk team is looking in the rearview mirror. CCMC is the 4x4 engine that lives inside your operations. It works when the internet is down, it explains itself to your auditors, and optimizes efficiency, increasing P&L, ROI & your bottom Line."

Contact

We are committed to **driving data innovation** for our partners and investors.

Phone: (224) 212-1350
Email: mario.tovar@ccmc.global
Website: ccmctech.global

